

Clarke®



HYDRAULIC PALLET TRUCK

MODEL NO: PT540M/BM/CM & PT685BM/CM

PART NO: 7631700, 7631705, 7631710, 7631715, 7631720

OPERATION & MAINTENANCE INSTRUCTIONS



LS0316

INTRODUCTION

Thank you for purchasing this CLARKE Hydraulic Pallet Truck.

Please note that the M, BM, and CM on the model number indicate the type of rollers on the pallet truck.

M = Single Nylon, BM = Single Polyurethane and CM = Twin Polyurethane

Before attempting to use this product, please read this manual thoroughly and follow the instructions carefully. In doing so you will ensure the safety of yourself and that of others around you, and you can look forward to your purchase giving you long and satisfactory service.

INTENDED USE

This pallet truck is a manually operated hand pallet truck designed to lift and transport the rated load on industrial pallets.

Do not lift or carry people and don't use this pallet truck for any other purpose than its intended use. incorrect usage can cause injuries or can damage equipment.

The operator / operating company has to ensure the correct usage and that this pallet truck is used only by staff who are trained and authorized to use this pallet truck.



WARNING: THE TRUCK HAS TO BE USED ON SUBSTANTIALLY FIRM, SMOOTH, LEVEL AND PREPARED SURFACES. THE LOAD MUST BE PLACED CENTRALLY ON THE FORKS.

GUARANTEE

This product is guaranteed against faulty manufacture for a period of 12 months from the date of purchase. Please keep your receipt which will be required as proof of purchase.

This guarantee is invalid if the product is found to have been abused or tampered with in any way, or not used for the purpose for which it was intended.

Faulty goods should be returned to their place of purchase, no product can be returned to us without prior permission.

This guarantee does not effect your statutory rights.

ENVIRONMENTAL PROTECTION

Do not dispose of this product or its packaging with general household waste. All tools, accessories and packaging should be sorted, taken to a recycling centre and disposed of appropriately.

To avoid pollution due to oil leakage, the user should provide some absorbent materials to capture any escape of oil during refilling of the hydraulic mechanism. Such materials should then be disposed of appropriately.

SAFETY INSTRUCTIONS

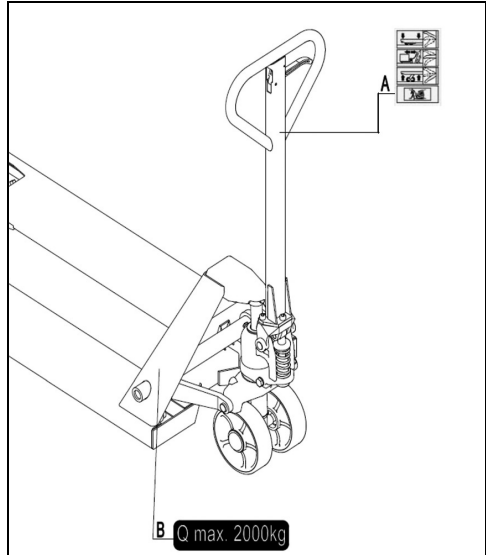
1. The operator should read all warning signs and instructions here and on the pallet truck before use.
2. Keep these instructions safe for future reference.
3. Examine the condition of the pallet truck before use, with particular attention to the wheels, handle, forks and lift/lower controls. Do not use the pallet truck if any defects are found.
4. Do not operate a hand pallet truck unless you are familiar with it and have been trained or authorized to do so.
5. Do not make any changes or modifications to the pallet truck.
6. Do not use if the wheels or rollers are damaged. Have them replaced immediately
7. Keep the work area tidy and well lit.
8. Keep children and bystanders away from the work area.
9. Do not exceed the capacity of the pallet truck. Refer to the labelling on the pallet truck and the specifications section in this manual,
10. Do not use on rough terrain. The pallet truck is designed for use on smooth flooring only.
11. Do not use the pallet truck on a gradient if the load is too heavy to be easily handled by the operator. The pallet truck must not be used by anyone not capable of handling the full weight of the pallet truck when loaded.
12. Watch for differences in the floor levels when moving the truck. The load may overbalance or the truck could become uncontrollable.
13. Do not let the pallet truck come into direct contact with food.
14. DO NOT Use the truck in explosive atmospheres.

15. The operator must wear safety shoes and gloves.
16. Do not allow personnel other than the operator to stand in front of or behind the truck when it is moving or lifting/lowering.
17. Do not put your foot in front of rolling wheels, Injury could result.
18. Do not use the pallet truck as a jack.
19. Load the pallet truck evenly with the centre of gravity of the load above the centre of the forks. Do not move unstable or loosely stacked loads. Use extra care when moving long, tall or wide loads which impair your view.
20. Keep watching the load. Stop if the load becomes unstable.
21. When not in use, always make sure that the truck is stored where it is not danger to others. Do not leave the truck on a gradient without first securely chocking the wheels.
22. Carry out maintenance work according to the “Maintenance” on page 9.
23. This truck is not designed to be water resistant, therefore use it in dry environments.

MARKINGS AND DECALS

Before using the pallet truck, ensure that all markings and decals are on the right place and not damaged. If necessary replace the decals.

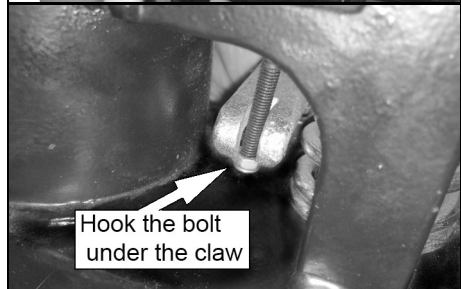
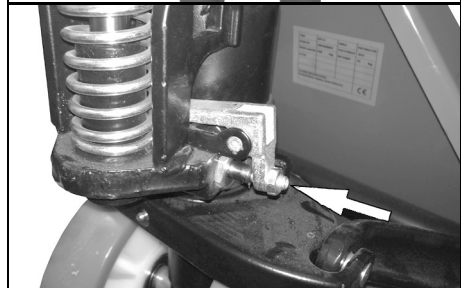
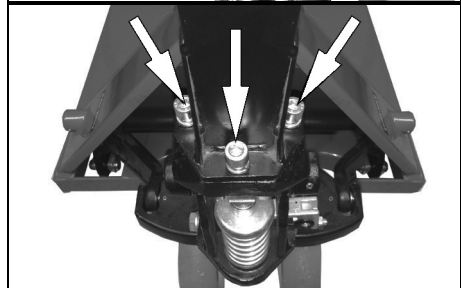
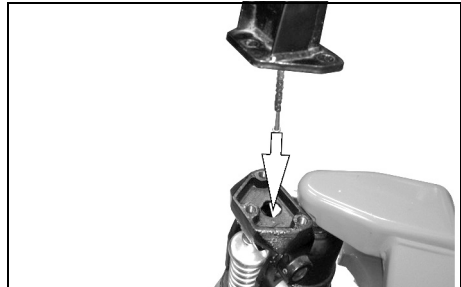
- A Operating instruction label
- B. Capacity label



ASSEMBLY

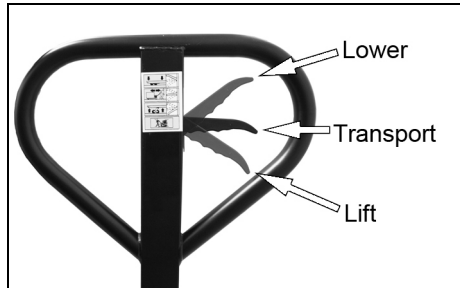
After unpacking, it is necessary to attach the truck handle assembly as follows.

1. Remove the 3 socket-headed screws from base bracket.
2. Take the handle assembly and lower the end of the chain through the hole in the pump body, so that it emerges at the bottom of the housing.
3. Secure the handle to the base bracket with the three socket-headed screws, as shown.
 - Tighten them with the hexagon key provided.
4. Push and hold the screw adjuster inwards to raise the end of the forked lever.
5. Hook the nut attached to the end of the chain, under the claws on the underside of the forks. Release the forked lever and use the screw adjuster to remove any slack from the mechanism.
6. Your pallet truck is now fully assembled, however, before you use it you must follow the adjustment procedure on the next page.



ADJUSTMENT

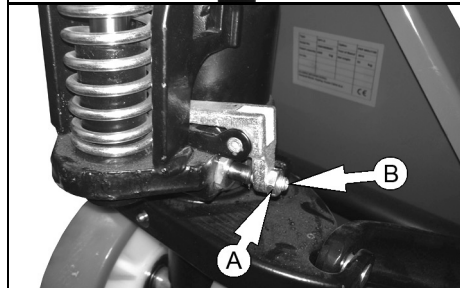
- The control lever has three positions shown and indicated by the label on the handle.
- With the lever pulled to the upper position, the forks will lower.
- The middle position allows the load to be transported.
- The lower position will cause the forks to lift when the handle is pumped.



1. Set the control lever to the LIFT position.



2. If the forks rise while pumping in the TRANSPORT position, release the locking nut (A) and turn the adjusting screw (B) clockwise until the pumping action does not raise the forks and they remain in position in the TRANSPORT position.



3. If the forks descend while pumping in the TRANSPORT position, turn the adjusting screw (B) anti-clockwise until the forks do not lower.
4. If the forks do not descend when the control handle is in the LOWER position, turn the adjusting screw (B) clockwise until raising the control handle lowers the forks. Check its operation in the TRANSPORT position.
5. If the forks do not elevate while pumping in the LIFT position, turn the adjusting screw (B) anti-clockwise until the forks raise while pumping in the LIFT position. Finally check the operation in the LOWER and TRANSPORT positions.

OPERATING INSTRUCTIONS

DAILY INSPECTION

Daily inspection is effective to find any malfunction or fault on the pallet truck.



WARNING: DO NOT USE THE PALLET TRUCK IF ANY MALFUNCTION OR DEFECT IS FOUND.

1. Check the following points before operation.
 - Visually check for structural deformation or cracks and listen for any unusual noise or binding of the lifting mechanism.
 - Check if there is any oil leakage.
 - Raise/Lower the forks to check for vertical creep of the lifting mechanism.
 - Check for any damage to the wheels and make sure they rotate smoothly.
 - Check that all the bolts and nuts are tight.
 - Verify that all labels are in place.

PARKING

When parking the pallet truck, lower the forks to the lowest position and park on smooth, even level ground where it is not an obstruction.

LIFTING

1. Check that the load does not exceed the rated capacity of the pallet truck.
2. Roll the pallet truck with its forks slowly under the pallet/load until the back end of the fork rests against the load.

3. Move the operating lever down to the 'Lifting' position. Lift the load by moving the handle assembly up and down.

- The load must be evenly distributed across both forks.
- **DO NOT OVERLOAD THE PALLET TRUCK!**



MOVING

- Do not operate the truck on a slope.
- Watch for differences in the floor level when moving the pallet truck.
- Make sure that the load is stable.

Move the truck by pushing or pulling the handle assembly.

- If the pallet truck is moving, do not turn the handle at a right angle to stop the pallet truck.

LOWERING

Do not put your foot or hand under the lifting mechanism.

Lower the load by moving the operating lever up to the lowering position carefully.

- By releasing the lever, the lowering movement will stop.



Ensure there is adequate clearance behind you, then withdraw the pallet truck from the load.

MALFUNCTIONS

If there are any malfunctions, stop using it until it is repaired.

MAINTENANCE

Whilst the pallet truck requires very little maintenance, the following care can be expected.

PURGING AIR FROM THE HYDRAULIC SYSTEM

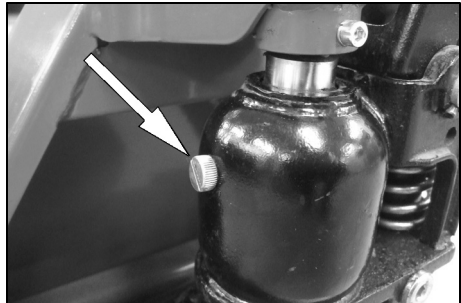
If the pallet truck has been transported over any distance or has been overturned at any time, air may have entered the hydraulic system. This will make it impossible to raise the forks under load.

1. Hold the control handle in the 'lower' position.
2. Move the handle up and down several times.



CHECKING THE OIL

1. Check the oil level every six months by topping up if necessary at the filler plug.
 - The capacity is approximately 0.3 litres.
 - The recommended type is L-HV46 Hydraulic oil, provided the truck is not to be used outside the temperature range of -20°C to +40°C.



GREASING

- Moving parts can be lubricated with motor oil or grease.
- After prolonged use, the pivoting action of the steering wheel assembly may become stiff. In this case, a shot of grease via the grease nipples will restore smooth movement.



TROUBLESHOOTING

PROBLEM	CAUSE	ACTION
The forks cannot be raised to the max height	Hydraulic oil is low	Top up with oil.
	The oil has impurities	Change the oil.
	The adjusting screw is not in the correct position.	See Page 6.
	Air in the hydraulic system.	Bleed the hydraulic system.
The forks cannot be lowered	The piston rod or pump body is deformed resulting from partial loading slanting to one side or over loading.	Replace the piston rod or the pump body.
	The fork was kept in the high position for long time with piston rod exposed which caused rusting and jamming of the rod.	Keep the fork in the lowest position when not in use, and lubricate the piston rod.
	The adjusting screw is not in the correct position.	See Page 6.
Leaks	oil seals worn or damaged.	Replace with the new one.
The forks lower on their own.	Impurities in the oil cause the release valve to remain open.	Replace with the new oil.
	Leaks in the hydraulic system.	Inspect and replace the broken parts.
	Air in the hydraulic system.	Bleed the hydraulic system. see Page 9.
	The adjusting screw is not in the correct position.	See Page 6.

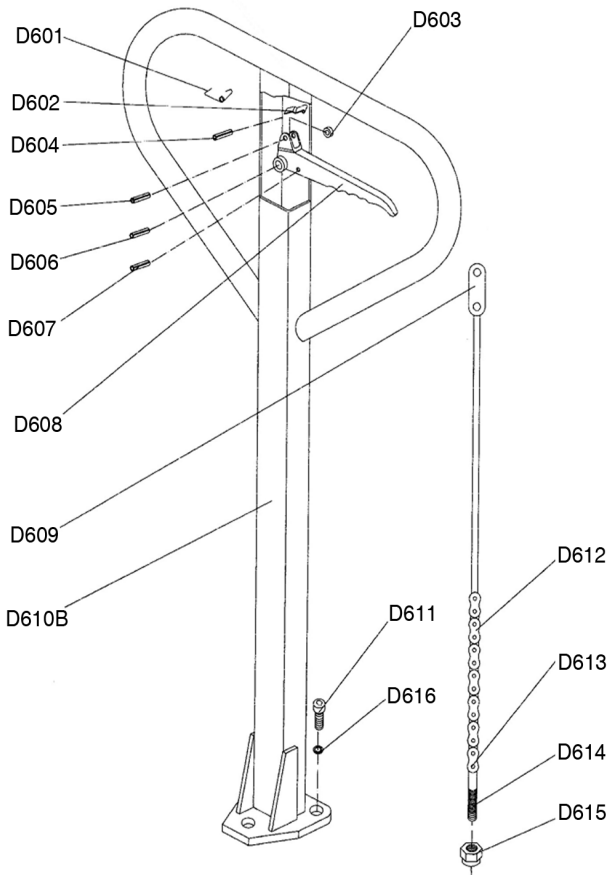
Do not attempt to repair the pallet truck unless you are trained or authorized to do so.

SPECIFICATION

	PT685BM	PT685CM	PT540BM	PT540M	PT540CM
Width to outside of the forks	685 mm	685 mm	540 mm	540 mm	540 mm
Fork Length	1150 mm	1150 mm	1150 mm	1150 mm	1150 mm
Gap between the forks.	360 mm	360 mm	220 mm	220 mm	220 mm
Maximum Capacity	2500 kg	2500 kg	2500 kg	2000 kg	2500 kg
Dims (L x W x H) mm	1555 x 540 x 1230	1555 x 540 x 1230	1555 x 520 x 1230	1555 x 520 x 1230	1555 x 520 x 1230
Weight	65 kg	67 kg	64 kg	61 kg	64 kg

Please note that the details and specifications contained herein, are correct at the time of going to print. However, CLARKE International reserve the right to change specifications at any time without prior notice.

PARTS DIAGRAM - HANDLE

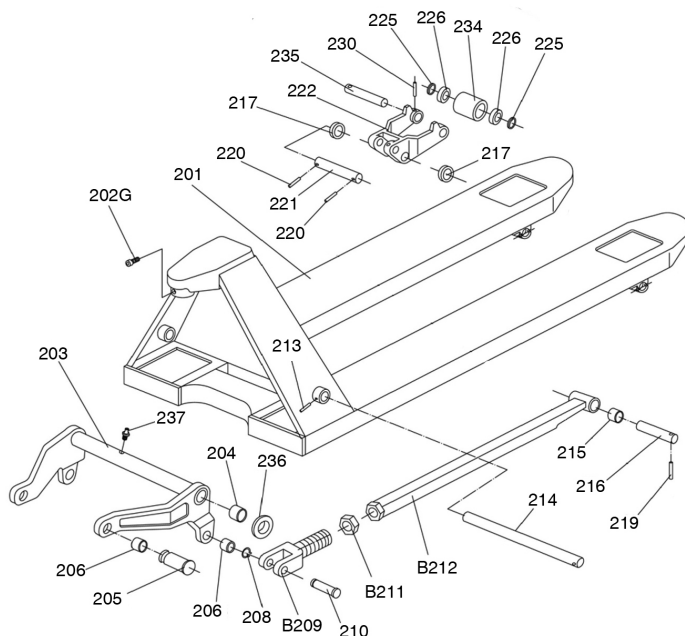


No	Description
D601	Spring
D602	Blade Spring
D603	Roller
D604	Roll Pin
D605	Roll Pin
D606	Roll Pin
D607	Roll Pin
D608	Control lever

No	Description
D609	Pull Board
D610B	Handle
D611	Screw
D612	Chain
D613	Pin
D614	Adjusting Bolt
D615	Adjusting nut
D616	Spring Washer

Please quote ZNEPT + Model Number + Part number above when ordering parts.

PARTS LIST + DIAGRAM - FORKS (M)

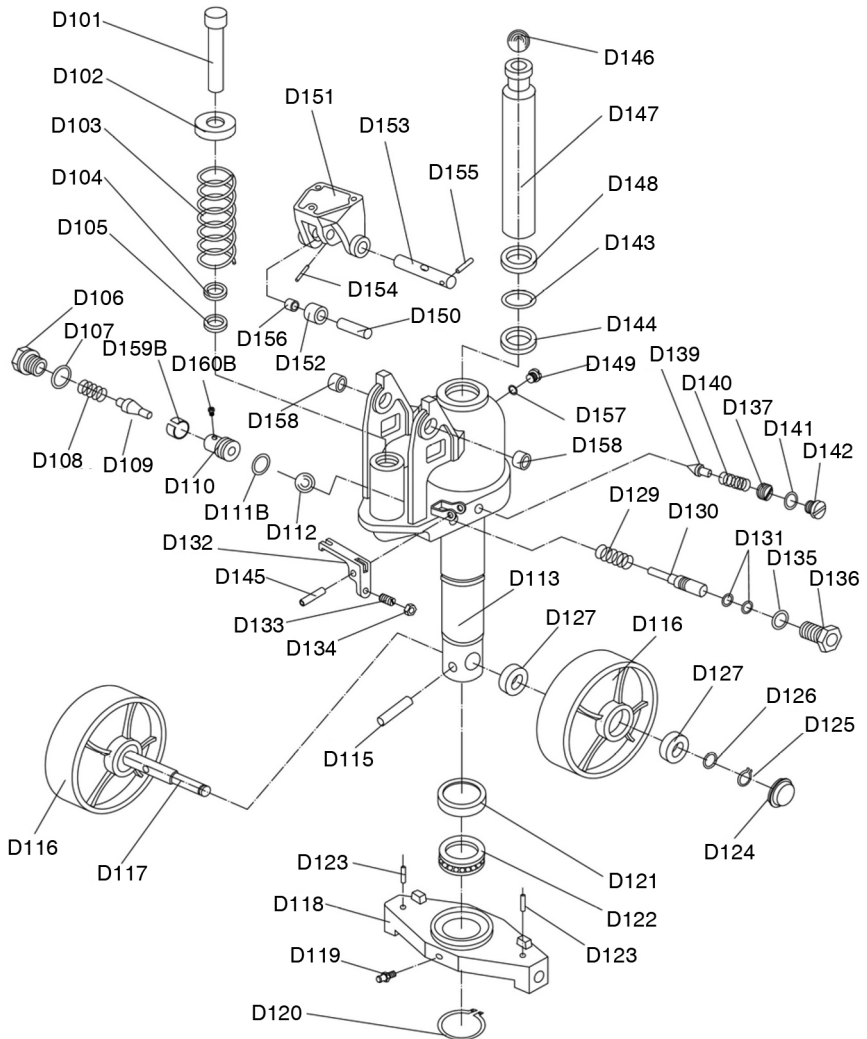


No	Description
201	Fork Frame
202G	Bolt
203	Arm assembly
204	Bushing, 25x29x25
205	Spindle
206	Bushing, 16*18*15
208	Circlip
B209	Joint
210	Pin
B211	Nut
B212	Push Rod
213	Roll Pin
214	Shaft
215	Bushing

No	Description
216	Shaft
217	Intermediate Roller
219	Roll Pin
220	Roll Pin
221	Shaft
222	Roller Bracket
225	Washer
226	Bearing
230	Roll Pin
234	Loading Roller
235	Shaft for Roller
236	Washer
237	Grease Nipple

Please quote ZNEPT + Model Number + Part number above when ordering parts.

PARTS DIAGRAM - PUMP (M)



PARTS LIST - PUMP (M)

No	Description
D101	Pump Piston Rod
D102	Washer
D103	Spring
D104	Dust Ring
D105	Y - Seal
D106	Screw
D107	O - Ring
D108	Spring
D109	Pumping Valve Spindle
D110B	Pumping Valve Seat
D111B	O - Ring
D112	Steel Ball
D113	Pump Base
D115	Roll Pin
D116	Steering Wheel
D117	Axle
D118	Thrust Plate
D119	Grease Nipple
D120	Circlip
D121	Bearing Cover
D122	Bearing
D123	Roll Pin
D124	Dust Cover
D125	Circlip
D126	Tab Washer
D127	Bearing
D129	Spring
D130	Strike Pin
D131	O - Ring

No	Description
D132	Lever
D133	Adjusting Screw
D134	Nut
D135	O - Ring
D136	Axle Sleeve
D137	Adjusting Bolt
D139	Safety Valve Spindle
D140	Spring
D141	O - Ring
D142	Screw
D143	O - Ring
D144	Y - Seal
D145	Roll Pin
D146	Steel Ball
D147	Piston Rod
D148	Dust Ring
D149	Filler Plug
D150	Shaft
D151	Bracket
D152	Pressure Roller
D153	Shaft
D154	Roll Pin
D155	Roll Pin
D156	Bush
D157	Seal Washer
D158	Bush
D159B	Sleeve
D160B	Screw
D161	Washer

Please quote ZNEPT + Model Number + Part number above when ordering parts.

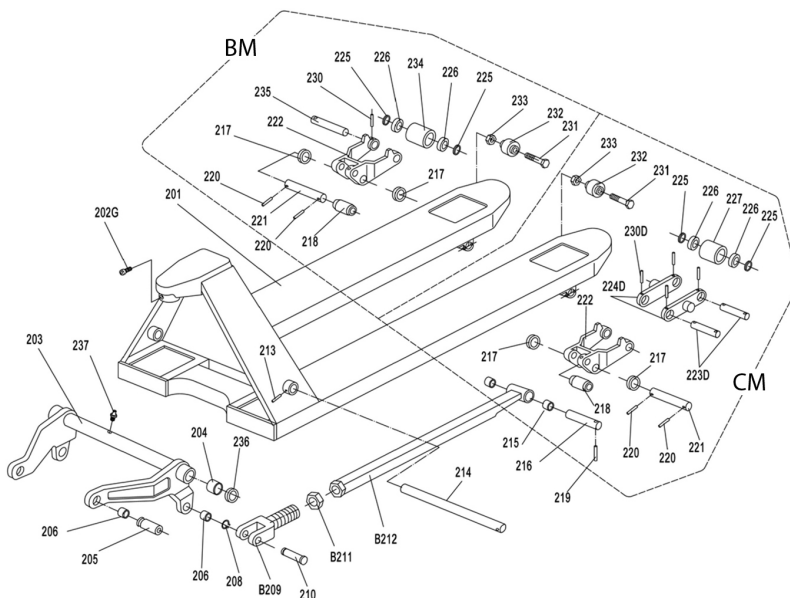
PARTS LIST - PUMP (BM + CM)

No	Description
D101	Pump Piston Rod
D102	Washer
D103	Spring
D104	Dust Ring
D105	Y - Seal
D106B	Bolt
D107B	O - Ring
D108	Spring
D109	Pumping Valve Spindle
D110B	Pumping Valve Seat
D111B	O - Ring
D112	Steel Ball
D113	Pump Base
D115	Roll Pin
D116	Steering Wheel
D117	Axle
D118	Thrust Plate
D119	Grease Nipple
D120	Circlip
D121	Bearing Cover
D122	Bearing
D123	Roll Pin
D124	Dust Cover
D125D	Circlip
D126D	Tab Washer
D127	Bearing
D129	Spring
D130	Strike Pin
D131	O - Ring

No	Description
D132	Lever
D133	Adjusting Screw
D134	Nut
D135	O - Ring
D136	Bolt
D137	Adjusting Bolt
D139	Safety Valve Spindle
D140	Spring
D141	O - Ring
D142	Screw
D143	O - Ring
D144	Y - Seal
D145	Roll Pin
D146	Steel Ball
D147	Piston Rod
D148	Dust Ring
D149	Filler Plug
D150	Shaft
D151	Bracket
D152	Pressure Roller
D153	Shaft
D154	Roll Pin
D155	Roll Pin
D156	Bush
D157	Seal Washer
D158	Bush
D159B	Sleeve
D160B	Sleeve
D161	Washer

Please quote ZNEPT + Model Number + Part number above when ordering parts.

PARTS LIST + DIAGRAM - FORKS (BM + CM)



No	Description
201	Fork Frame
202G	Bolt
203	Lever Arm
204	Bush 25 x 29 x 25
205	Shaft
206	Bushing, 16*18*15
208	Circlip
B209	Clevis
210	Clevis Pin
B211	Nut
B212	Push Rod
213	Roll Pin
214	Shaft
215	Bush
216	Shaft
217	Intermediate Roller
218	Extending Roller
219	Roll Pin

No	Description
220	Roll Pin
221	Shaft
222	Roller Bracket
223D	Roller Spindle
224D	Linking Plate
225	Washer
226	Bearing
227	Loading Roller
230D	Roll Pin
230	Roll Pin
231	Bolt
232	Roller
233	Locking Nut
234	Loading Roller
235	Shaft for Roller
236	Washer
237	Grease Nipple

DECLARATION OF CONFORMITY



Clarke[®]
INTERNATIONAL

Hemnall Street, Epping, Essex CM16 4LG

DECLARATION OF CONFORMITY

This is an important document and should be retained.

We hereby declare that this product(s) complies with the following directive(s):

2006/42/EC Machinery Directive.

The following standards have been applied to the product(s):

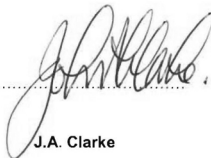
ISO/ TS 3691-5, ISO/ TS 3691-7.

The technical documentation required to demonstrate that the product(s) meet(s) the requirement(s) of the aforementioned directive(s) has been compiled and is available for inspection by the relevant enforcement authorities.

The CE mark was first applied in: 2006

Product Description: Pallet Trucks (2T,2.5T)
Model number(s): PT685BM , PT685CM, PT540BM, PT540M, PT540CM,.
Serial / batch Number: N/A
Date of Issue: 01/02/2016

Signed:



.....

J.A. Clarke
Director

A SELECTION FROM THE VAST RANGE OF

Clarke®

QUALITY PRODUCTS

AIR COMPRESSORS

From DIY to industrial, Plus air tools, spray guns and accessories.

GENERATORS

Prime duty or emergency standby for business, home and leisure.

POWER WASHERS

Hot and cold, electric and engine driven - we have what you need

WELDERS

Mig, Arc, Tig and Spot. From DIY to auto/industrial.

METALWORKING

Drills, grinders and saws for DIY and professional use.

WOODWORKING

Saws, sanders, lathes, mortisers and dust extraction.

HYDRAULICS

Cranes, body repair kits, transmission jacks for all types of workshop use.

WATER PUMPS

Submersible, electric and engine driven for DIY, agriculture and industry.

POWERTOOLS

Angle grinders, cordless drill sets, saws and sanders.

STARTERS/CHARGERS

All sizes for car and commercial use.



PARTS & SERVICE: 0208 988 7400

E-mail: Parts@clarkeinternational.com or Service@clarkeinternational.com

SALES: UK 01992 565333 or Export 00 44 (0)1992 565335

Clarke® INTERNATIONAL Hemnall Street, Epping, Essex CM16 4LG
www.clarkeinternational.com